



Building with conscience.

# StoVeneer Wood

Mineral veneer board for a timber look

Facade



StoVeneer Wood boards made of Sto-RFP are used to create an authentic timber board or board form concrete look on external and internal surfaces. The boards are quick and easy to apply and can be stained in various shades, or painted.

# StoVeneer Wood

## A new approach

A simple, cost-effective and time-efficient way to achieve the look of timber board or board form concrete.

StoVeneer Wood boards are available 2.0 m long x 160 mm high x 2 mm thick and consist of Sto-RFP with embedded Sto-Glass Fibre Mesh. The boards are individually grained for a realistic timber look and can easily be cut to size with a utility knife. They can be stained or painted in a range of colours to achieve a timber board look, or they can be finished to mirror board form concrete, without the need for additional structural work.

### Low-maintenance facades

The application of StoVeneer Wood is possible over a wide range of substrates. It is reinforced with a Sto Render System for maximum system longevity and is covered by a Sto Warranty, delivering a durable and low-maintenance solution for all architectural and construction demands, residentially and commercially.

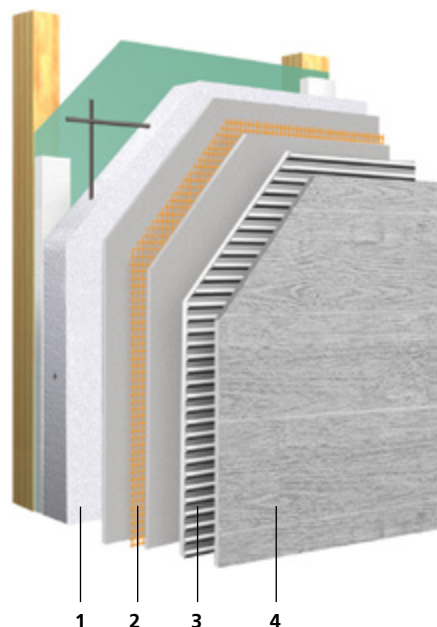
### Planning flexibility

There is a lot of scope for design, from the creation of architecturally accentuated exterior surfaces, interior walls to feature areas. The decision to clad exterior facades or interior surfaces with StoVeneer Wood can be made at most stages of the design or construction process, as the system build-up only consists of two layers, 5 mm in thickness.

### New builds or renovations

The StoVeneer Wood System is suitable for sound and load-bearing substrates, available for new builds or renovations, and for use with any of our Sto Facade and Render Systems.

For project specific specification contact us.



### Perfect interaction

- 1 — Substrate:**  
AAC Panel (shown). Options include all exterior Sto rendered facades and interior surfaces\*.
- 2 — Reinforcement:**  
Sto render with reinforcing mesh\*.
- 3 — Bonding:**  
Sto-RFP.
- 4 — Finish:**  
StoVeneer Wood with StoAqua Top Satin or StoColor Maxicryl.

\*Refer to Sto facade and render systems for all options.



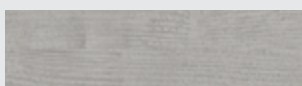
## Product advantages

- Authentic timber board or board form concrete appearance.
- Cost-effective and time-efficient to install.
- Exterior and interior applications.
- For new builds or renovations.
- Hard-wearing, durable and easy to maintain.
- For a wide range of substrates suitable for render.
- Simple installation.
- Can be stained or painted in various shades.

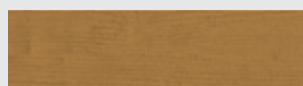


StoVeneer Wood accentuated area.

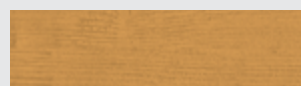
## StoAqua Top Satin - Standard colour shades



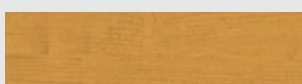
**38101 Grey**  
LRV 44



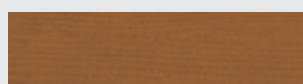
**38103 Light oak**  
LRV 25



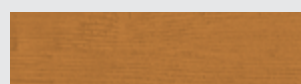
**38111 Ash**  
LRV 39



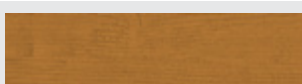
**38113 Pine**  
LRV 40



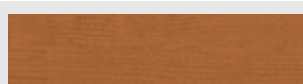
**38140 Walnut**  
LRV 18



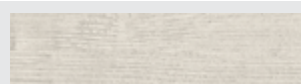
**38144 Old pine**  
LRV 28



**38146 Oak**  
LRV 24



**38147 Teak**  
LRV 17



**38151 Natural white**  
LRV 77

StoVeneer Wood can be stained in various shades with StoAqua Top Satin, or painted with StoColor Maxicyrl.

**Note**  
The images serve as a point of reference for the future appearance of the coating. In practice, the colours may deviate from the images.

**Head Office**

**Dandenong**

Sto Australia Pty Ltd  
22 Park Drive  
Dandenong, VIC, Australia  
Phone +61 3 9768 4900  
Fax +61 3 9768 4999

**General Enquiries**

Phone +61 3 9768 4900  
Email: [sales@stoaustralia.com.au](mailto:sales@stoaustralia.com.au)  
[www.stoaustralia.com.au](http://www.stoaustralia.com.au)



**Oakleigh**

1346 North Road  
Oakleigh South, VIC, Australia  
Phone +61 3 9540 0963  
Fax +61 3 9544 3620

**New South Wales**

14 Artisan Road  
Seven Hills, VIC, Australia  
Phone +61 2 9838 0911  
Fax +61 2 9838 9555

**South Australia**

2/54-56 Cavan Road  
Dry Creek, VIC, Australia  
Phone +61 8 8262 7900  
Fax +61 8 8262 7922